

**APPENDIX E-2**  
*Tree Survey*



---

# Tree Survey

## GENERAL MILLS PROJECT VALLEJO, SOLANO COUNTY, CALIFORNIA

---

**Prepared For:**

Devin Hassett  
Cherokee Brooks-Street Vallejo, LLC  
c/o Brooks-Street  
900 Walnut Avenue, Quarters D  
Vallejo, CA 94592

**Contact:**

Julie Rentner  
ISA Certified Arborist WE-7742A  
rentner@wra-ca.com

**Date:**

April 2008





**TABLE OF CONTENTS**

INTRODUCTION. . . . . 1  
    General Project Area Description. . . . . 1  
METHODS. . . . . 1  
RESULTS. . . . . 3

**LIST OF TABLES**

Table 1. Rating narratives for tree assessment. . . . . 2  
Table 2. Tree Survey Summary. . . . . 3

**LIST OF FIGURES**

Figure 1. Location of Project Area. . . . . 4

**APPENDICES**

- Appendix A - Tree Survey Maps
- Appendix B - Complete Tree Survey



## INTRODUCTION

On April 25, 28, and 29, 2008, WRA, Inc. conducted a complete tree survey of the General Mills site in Vallejo (Project Area), Solano County, California (Figure 1). This survey included all trees with diameter at breast height (DBH) larger than 6 inches for the purposes of completing a tree disposition plan for proposed development of the site. Each tree was assessed for species, DBH, canopy radius, overall condition, health, and structural condition. Additionally all trees were mapped with sub-meter accuracy GPS receivers. A map of all surveyed trees is presented in Appendix A. The complete tree survey data table is presented in Appendix B.

### General Project Area Description

The Project Area is a former flour mill complex and an adjacent hillside in Vallejo, Solano County, California. It is bordered to the east and north by residential and commercial development. To the south, there is a small area of open space, predominately non-native grassland. The Project Area is bordered on the west by Mare Island Strait. Elevations in the Project Area range from 0 to 140 feet (0 to 43 meters).

The hillside in the eastern portion of the site has a southwestern aspect and is undeveloped with the exception of a residence and associated buildings. The southern portion of the hillside supports groves of exotic ornamental trees, dominated by acacia (*Acacia* spp.), eucalyptus (*Eucalyptus* spp.), and pines (*Pinus* spp.). A few scattered native trees are present, including coast live oak (*Quercus agrifolia*) and toyon (*Heteromeles arbutifolia*). The residence area supports several species of ornamental trees. The western portion of the site supports a fairly young plantation of pine, acacia, and cedar (*Cedrus deodara*) trees.

## METHODS

On April 25, 28, and 29, 2008 the Project Area was traversed on foot to inventory all trees 6 inches and larger within the Project Area boundary. WRA staff arborist Julie Rentner (ISA# WE-7742A) traversed the entire Project Area on foot and recorded relevant tree information and locations.

Each tree was identified by species, size (DBH measured at 4.5 feet above the ground at grade), average crown radius (the average of three crown radius measurements taken in different directions from the trunk), and approximate location. General notes on the condition of trees were taken. Trunk locations were mapped for each tree.

The general condition of each tree was assessed by evaluating health and structure through visual investigation. The health and structure of each tree were scored individually prior to assignment of an overall condition score. Notes regarding tree health or structure were recorded when appropriate. Assessment of the general condition, health, and structure of each tree was conducted according to the following rating narratives:

Table 1. Rating narratives for tree assessment	
<b>General Condition</b>	
good	Tree shows condition of foliage, bark, and overall structure characteristic of the species and lacking obvious defect or disease
fair	Tree shows condition of foliage, bark, and overall structure characteristic of the species with some evidence of stress, defect, or disease
poor	Tree shows condition of foliage, bark, and overall structure uncharacteristic of the species with obvious evidence of stress, defect, or disease
<b>Health</b>	
good	Tree is free from symptoms of disease and stress
fair	Tree shows some symptoms of disease or stress including twig and small branch dieback, evidence of fungal / parasitic infection, thinning of crown, or poor leaf color
poor	Tree shows symptoms of severe decline
<b>Structure</b>	
good	Tree is free from major structural defects
fair	Tree shows some structural defects in branches but overall structure is stable
poor	Tree shows structural failure of a major branch or codominant trunk



## RESULTS

A total of five hundred twenty-three (523) trees were inventoried in this assessment. A complete list of all trees surveyed is presented in Appendix B. No trees surveyed were native to this region of California with the exception of coast live oak (*Quercus agrifolia*), and toyon (*Heteromeles arbutifolia*). One toyon measuring over 6 inches DBH and seven coast live oaks were inventoried. Tree locations are shown in Appendix A. A summary of tree species observed is presented in Table 2.

Species	# surveyed	Species	# surveyed
blue gum eucalyptus	199	peppermint gum eucalyptus	4
white ironbark eucalyptus	66	callery pear	4
blackwood acacia	61	southern magnolia	2
Monterey pine	55	Mexican fan palm	2
aleppo pine	31	English walnut	2
red gum eucalyptus	28	rose locust	1
brown gum eucalyptus	13	ornamental birch	1
silver wattle acacia	12	toyon	1
Canary Island pine	9	western chokecherry	1
deodar cedar	8	casacara buckthorn	1
coast live oak	7	Canary Island date	1
Australian beech	6	Oregon crabapple	1
incense cedar	6	London plane	1





Figure 1. Project Area Location Map

General Mills  
Vallejo, CA



0 1,000 2,000 4,000 Feet



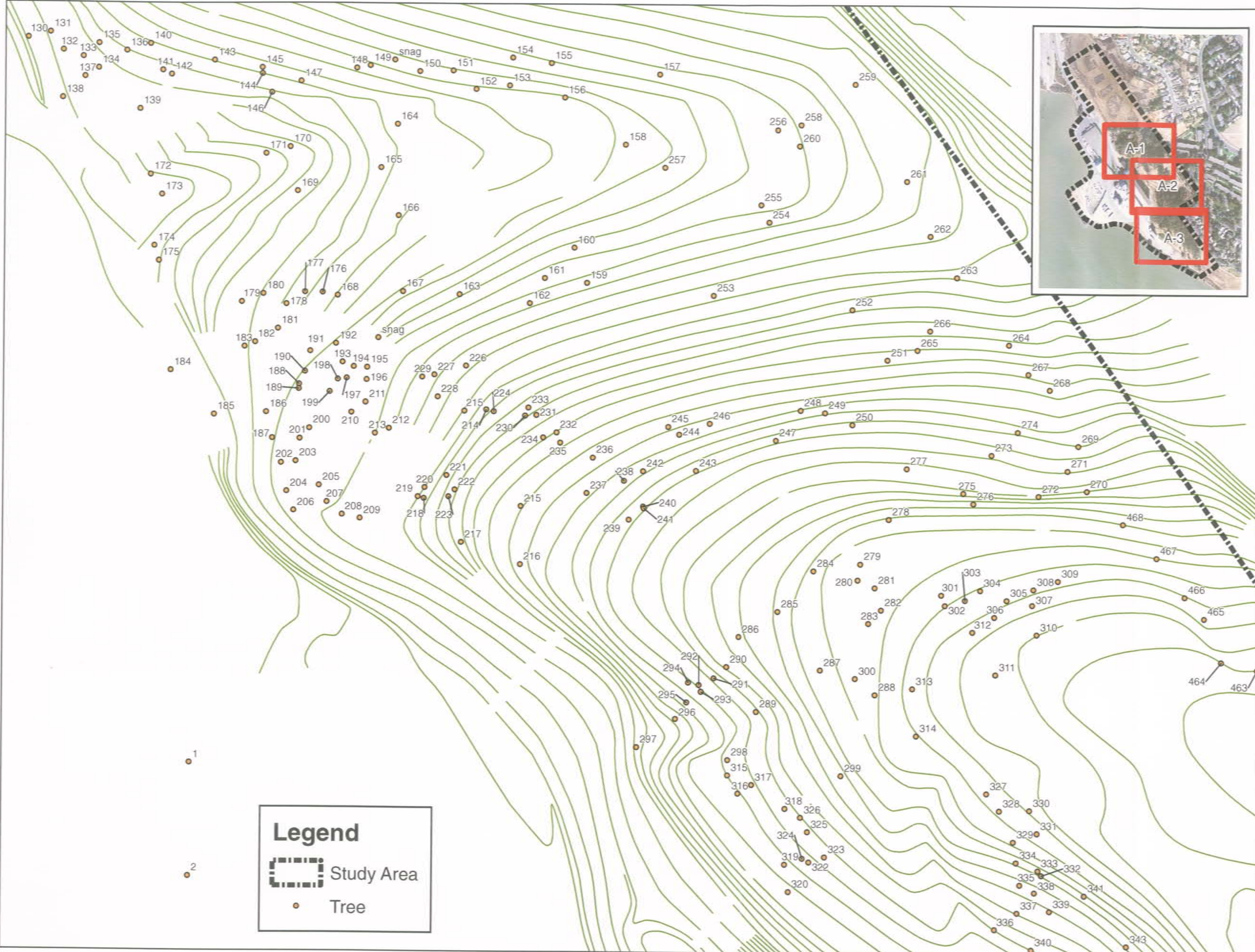
Date: August 2007  
 Basemap: USGS Topo Quad  
 Map By: Derek Chan  
 Filepath: L:\Acad 2000Files\17000\17038\gis\arcmap\  
 Bio\Fig1\_LocMap\_20070817.mxd



**Appendix A - Tree Survey Maps**









ENVIRONMENTAL CONSULTANTS

2169-G East Francisco Blvd.  
 San Rafael, CA 94901  
 (415) 454-8868 Phone  
 (415) 454-0129 Fax

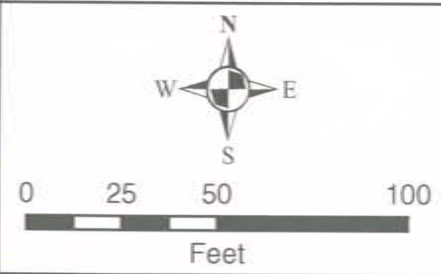
General Mills  
 Vallejo, CA

**Appendix A-1**  
**Tree Survey Map**

**Legend**

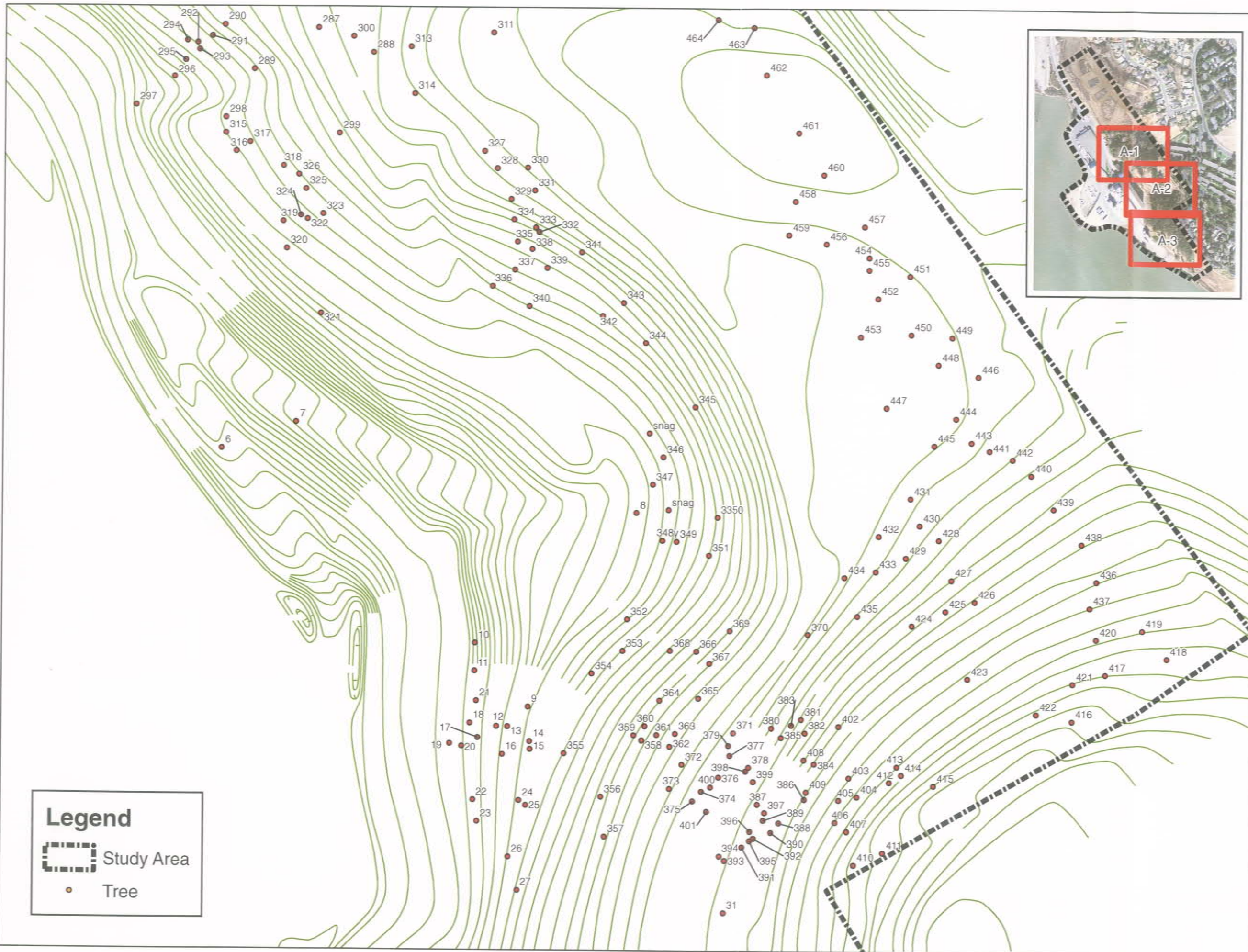
-  Study Area
-  Tree

*This map is representational only, and not meant for use in detailed design.*



Date: April 2008  
 Image Date: 2004  
 Image Source: TerraServer  
 Map By: Derek Chan  
 Filepath: L:\Acad 2000Files\17000\17038\gis\arcmap\AppendixA\_TreeSurvey\_043008.mxd







ENVIRONMENTAL CONSULTANTS

2169-G East Francisco Blvd.  
 San Rafael, CA 94901  
 (415) 454-8868 Phone  
 (415) 454-0129 Fax

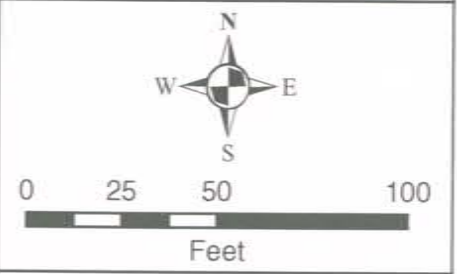
General Mills  
 Vallejo, CA

**Appendix A-2**  
**Tree Survey Map**

**Legend**

-  Study Area
-  Tree

*This map is representational only, and not meant for use in detailed design.*



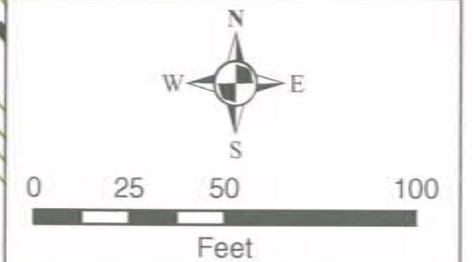
Date: April 2008  
 Image Date: 2004  
 Image Source: TerraServer  
 Map By: Derek Chan  
 Filepath: L:\Acad 2000Files\17000\17038\gis\arcmap\AppendixA\_TreeSurvey\_043008.mxd





General Mills  
Vallejo, CA

### Appendix A-3 Tree Survey Map

*This map is representational only, and not meant for use in detailed design.*



**Legend**

-  Study Area
-  Tree





## **Appendix B - Complete Tree Survey**



General Mills Site - Tree Survey

April 25, 28, 2008



ID #	species	common name	DBH (in.)	sum DBH (in.)	average crown radius (ft.)	Overall Condition	Health	Structure	Notes
1	<i>Magnolia grandiflora</i>	southern magnolia	6.8	6.8	9.3	Good	Good	Good	well manicured
2	<i>Magnolia grandiflora</i>	southern magnolia	6.6	6.6	8.7	Good	Good	Good	well manicured
3	<i>Acacia melanoxylon</i>	blackwood acacia	8.9	8.9	5.0	Fair	Good	Fair	crowded, lean
4	<i>Acacia melanoxylon</i>	blackwood acacia	14, 15.4, 10.7, 13.7, 8.6, 10.1, 15.7	88.2	22.0	Good	Good	Fair	spreading, healthy crown
5	<i>Pinus halepensis</i>	aleppo pine	16.4	16.4	6.0	Poor	Poor	Fair	stressed, thin crown
6	<i>Eucalyptus globulus</i>	blue gum	24	24	12.3	Poor	Poor	Poor	roots exposed, sparse crown
7	<i>Eucalyptus globulus</i>	blue gum	9.5, 6, 6.8	22.3	14.3	Poor	Fair	Poor	branch dieback, sparse crown, included bark
8	<i>Pinus halepensis</i>	aleppo pine	7.8	7.8	9.0	Fair	Poor	Good	pitchy
9	<i>Eucalyptus globulus</i>	blue gum	33.7	33.7	23.0	Fair	Fair	Fair	lean, branch dieback
10	<i>Eucalyptus leucoxylon</i>	white ironbark	12.4	12.4	8.0	Poor	Fair	Poor	major lean, branch dieback
11	<i>Eucalyptus robusta</i>	brown gum	14.5	14.5	9.3	Poor	Fair	Poor	suppressed, lean, trunk damage
12	<i>Eucalyptus globulus</i>	blue gum	31	31	20.3	Fair	Good	Fair	major lean, branch dieback
13	<i>Eucalyptus globulus</i>	blue gum	8.1	8.1	8.0	Fair	Fair	Fair	spindly, small crown
14	<i>Eucalyptus globulus</i>	blue gum	23.1, 21.7, 7.2	52	21.3	Fair	Good	Fair	dominant, branch dieback
15	<i>Eucalyptus globulus</i>	blue gum	7.3, 10.6	17.9	6.7	Fair	Fair	Fair	spindly, branch dieback
16	<i>Eucalyptus globulus</i>	blue gum	8.4	8.4	8.0	Fair	Fair	Fair	suppressed

General Mills Site - Tree Survey

April 25, 28, 2008



ID #	species	common name	DBH (in.)	sum DBH (in.)	average crown radius (ft.)	Overall Condition	Health	Structure	Notes
17	<i>Eucalyptus globulus</i>	blue gum	17.5	17.5	11.3	Fair	Fair	Fair	branch dieback, lean, trunk damage
18	<i>Eucalyptus globulus</i>	blue gum	7.4	7.4	4.0	Fair	Fair	Poor	exposed roots
19	<i>Eucalyptus globulus</i>	blue gum	8.9, 7.8	16.7	6.7	Poor	Fair	Poor	exposed roots
20	<i>Eucalyptus camaldulensis</i>	red gum	14.9, 8.2	23.1	7.0	Fair	Good	Fair	exposed roots
21	<i>Eucalyptus globulus</i>	blue gum	7	7	5.7	Poor	Fair	Poor	suppressed, trunk damage
22	<i>Eucalyptus globulus</i>	blue gum	11.6, 8.7, 7.1	27.4	6.0	Fair	Fair	Fair	roots exposed, sparse crown
23	<i>Eucalyptus globulus</i>	blue gum	9.1, 10.7, 10.7, 7.4	37.9	9.3	Fair	Fair	Fair	exposed roots
24	<i>Eucalyptus globulus</i>	blue gum	36.9	36.9	15.0	Fair	Fair	Fair	branch dieback
25	<i>Eucalyptus globulus</i>	blue gum	21.8, 10.7, 9.2	41.7	16.0	Fair	Good	Fair	sparse crown
26	<i>Eucalyptus globulus</i>	blue gum	38.6, 11.7, 6.1, 7.3	63.7	15.3	Fair	Good	Fair	dominant, exposed roots
27	<i>Eucalyptus leucoxylon</i>	white ironbark	14.1	14.1	11.3	Poor	Fair	Poor	branch dieback, sparse crown, lean
28	<i>Eucalyptus globulus</i>	blue gum	36.8	36.8	18.3	Fair	Good	Fair	dominant, branch dieback
29	<i>Eucalyptus globulus</i>	blue gum	6.5	6.5	6.0	Poor	Fair	Poor	broken trunk, branch dieback, small crown
30	<i>Eucalyptus globulus</i>	blue gum	12.2	12.2	6.7	Poor	Poor	Poor	branch dieback, sparse crown, trunk damage
31	<i>Pinus halepensis</i>	aleppo pine	13.3	13.3	5.3	Poor	Poor	Poor	major lean, small crown, branch dieback, trunk damage
32	<i>Eucalyptus globulus</i>	blue gum	30.8	30.8	16.7	Poor	Poor	Poor	major branch dieback, senescent

General Mills Site - Tree Survey

April 25, 28, 2008



ID #	species	common name	DBH (in.)	sum DBH (in.)	average crown radius (ft.)	Overall Condition	Health	Structure	Notes
33	<i>Eucalyptus globulus</i>	blue gum	18.6	18.6	9.3	Poor	Fair	Poor	suppressed, major lean
34	<i>Eucalyptus globulus</i>	blue gum	36.5	36.5	24.0	Good	Good	Good	dominant
35	<i>Eucalyptus globulus</i>	blue gum	16.3	16.3	12.0	Fair	Good	Fair	lean, branch dieback
36	<i>Eucalyptus globulus</i>	blue gum	29.5	29.5	15.3	Poor	Poor	Poor	major lean, small crown, branch dieback, trunk damage
37	<i>Eucalyptus globulus</i>	blue gum	23.5	23.5	15.3	Good	Fair	Good	small branch dieback, slight lean
38	<i>Acacia melanoxylon</i>	blackwood acacia	7.6	7.6	8.0	Fair	Good	Fair	slight lean, nice crown
39	<i>Eucalyptus globulus</i>	blue gum	29.6	29.6	23.3	Good	Good	Good	dominant, vigorous
40	<i>Eucalyptus globulus</i>	blue gum	28.7	28.7	19.3	Good	Fair	Good	dominant, branch dieback
41	<i>Eucalyptus globulus</i>	blue gum	19.7	19.7	15.3	Poor	Poor	Poor	almost dead, broken top
42	<i>Eucalyptus globulus</i>	blue gum	24.6	24.6	12.7	Fair	Good	Fair	branch dieback, crown damage
43	<i>Eucalyptus globulus</i>	blue gum	22.6	22.6	14.7	Fair	Fair	Fair	crowded
44	<i>Eucalyptus globulus</i>	blue gum	21.8	21.8	18.7	Good	Fair	Good	branch dieback
45	<i>Eucalyptus globulus</i>	blue gum	22.6	22.6	8.7	Fair	Fair	Fair	small crown, trunk damage
46	<i>Eucalyptus globulus</i>	blue gum	29.5	29.5	22.7	Fair	Fair	Fair	dominant, branch dieback
47	<i>Eucalyptus globulus</i>	blue gum	12	12	7.3	Poor	Poor	Poor	branch dieback, suppressed
48	<i>Eucalyptus globulus</i>	blue gum	22.5	22.5	11.3	Fair	Fair	Fair	branch dieback, sparse crown

General Mills Site - Tree Survey

April 25, 28, 2008



ID #	species	common name	DBH (in.)	sum DBH (in.)	average crown radius (ft.)	Overall Condition	Health	Structure	Notes
49	<i>Eucalyptus globulus</i>	blue gum	7.2, 10.6	17.8	6.7	Poor	Fair	Poor	small crown, spindly, trunk damage, branch dieback
50	<i>Eucalyptus globulus</i>	blue gum	11.3	11.3	10.0	Poor	Fair	Poor	small crown, spindly, trunk damage, branch dieback
51	<i>Eucalyptus globulus</i>	blue gum	7.8	7.8	4.3	Poor	Fair	Poor	small crown, spindly, trunk damage, branch dieback
52	<i>Pinus radiata</i>	Monterey pine	16.9	16.9	9.3	Poor	Fair	Poor	damaged, crowded, branch dieback
53	<i>Eucalyptus leucoxylon</i>	white ironbark	6.5	6.5	5.3	Poor	Poor	Poor	suppressed, branch dieback
54	<i>Eucalyptus leucoxylon</i>	white ironbark	12.9	12.9	6.0	Fair	Poor	Fair	branch dieback, small crown
55	<i>Eucalyptus leucoxylon</i>	white ironbark	13.8	13.8	12.7	Poor	Poor	Poor	branch dieback, suppressed
56	<i>Eucalyptus leucoxylon</i>	white ironbark	19.7	19.7	18.0	Fair	Fair	Fair	lean, branch dieback
57	<i>Eucalyptus leucoxylon</i>	white ironbark	10.1	10.1	8.7	Fair	Fair	Fair	lean, suppressed
58	<i>Eucalyptus leucoxylon</i>	white ironbark	14	14	10.7	Fair	Fair	Fair	branch dieback, lean
59	<i>Acacia melanoxylon</i>	blackwood acacia	8, 6	14	10.0	Fair	Good	Fair	small branch dieback
60	<i>Acacia melanoxylon</i>	blackwood acacia	8, 10	18	10.7	Fair	Good	Fair	small branch dieback
61	<i>Acacia melanoxylon</i>	blackwood acacia	8	8	9.3	Fair	Good	Fair	small branch dieback
62	<i>Pinus halepensis</i>	aleppo pine	16.3, 12	28.3	12.7	Fair	Fair	Poor	major lean, branch dieback
63	<i>Pinus halepensis</i>	aleppo pine	18.6	18.6	14.0	Poor	Poor	Fair	branch dieback, lean
64	<i>Pinus halepensis</i>	aleppo pine	12.2	12.2	10.0	Poor	Poor	Poor	trunk damage, sparse crown
65	<i>Eucalyptus globulus</i>	blue gum	6.6	6.6	8.0	Poor	Poor	Poor	suppressed, major lean

## General Mills Site - Tree Survey

April 25, 28, 2008



ID #	species	common name	DBH (in.)	sum DBH (in.)	average crown radius (ft.)	Overall Condition	Health	Structure	Notes
66	<i>Eucalyptus globulus</i>	blue gum	41.4, 19.2	60.6	32.3	Fair	Fair	Good	branch dieback, herbivory
67	<i>Acacia melanoxylon</i>	blackwood acacia	7.4, 6.0	13.4	8.7	Fair	Good	Fair	bent trunk, suppressed
68	<i>Eucalyptus globulus</i>	blue gum	27.8	27.8	21.3	Fair	Good	Fair	small branch dieback, crowded
69	<i>Eucalyptus leucoxylon</i>	white ironbark	10.1, 8.1	18.2	10.7	Poor	Poor	Poor	suppressed, sparse crown
70	<i>Eucalyptus leucoxylon</i>	white ironbark	20.8	20.8	18.0	Fair	Good	Fair	slightly suppressed
71	<i>Eucalyptus globulus</i>	blue gum	26.8	26.8	25.7	Good	Good	Good	dominant
72	<i>Eucalyptus globulus</i>	blue gum	19.8, 16.8	36.6	25.0	Fair	Fair	Fair	branch dieback, crowded
73	<i>Eucalyptus leucoxylon</i>	white ironbark	16.8	16.8	11.3	Fair	Fair	Poor	sparse crown, major lean
74	<i>Eucalyptus globulus</i>	blue gum	16.3	16.3	15.3	Fair	Good	Poor	suppressed, lean
75	<i>Pinus radiata</i>	Monterey pine	8.8	8.8	6.7	Poor	Poor	Poor	major lean, branch dieback
76	<i>Eucalyptus leucoxylon</i>	white ironbark	10.9, 7.9	18.8	10.0	Fair	Fair	Fair	trunk damage, small sparse crown
77	<i>Eucalyptus globulus</i>	blue gum	32.2	32.2	23.3	Good	Good	Good	small branch dieback, dominant
78	<i>Eucalyptus globulus</i>	blue gum	13.7	13.7	14.0	Poor	Fair	Poor	branch dieback, sparse crown
79	<i>Eucalyptus globulus</i>	blue gum	8, 21.2, 15.6	44.8	26.7	Fair	Good	Fair	lean, crowded
80	<i>Eucalyptus globulus</i>	blue gum	28.5	28.5	35.0	Fair	Good	Fair	dominant, branch dieback
81	<i>Eucalyptus globulus</i>	blue gum	15.6	15.6	7.3	Poor	Poor	Poor	branch dieback, damaged trunk

## General Mills Site - Tree Survey

April 25, 28, 2008



ID #	species	common name	DBH (in.)	sum DBH (in.)	average crown radius (ft.)	Overall Condition	Health	Structure	Notes
82	<i>Eucalyptus globulus</i>	blue gum	8.9, 17.8	26.7	18.0	Fair	Fair	Fair	crowded
83	<i>Eucalyptus leucoxylon</i>	white ironbark	9.6	9.6	2.7	Poor	Poor	Poor	very sparse crown, branch dieback
84	<i>Eucalyptus leucoxylon</i>	white ironbark	9, 9.6	18.6	8.7	Poor	Poor	Poor	very sparse crown, branch dieback
85	<i>Pinus radiata</i>	Monterey pine	8.5	8.5	6.0	Poor	Poor	Poor	suppressed
86	<i>Pinus radiata</i>	Monterey pine	11.2	11.2	7.3	Fair	Fair	Fair	
87	<i>Pinus radiata</i>	Monterey pine	15.8	15.8	12.0	Poor	Poor	Fair	large raptor nest, stressed
88	<i>Pinus radiata</i>	Monterey pine	9.6	9.6	8.0	Poor	Poor	Poor	suppressed
89	<i>Pinus radiata</i>	Monterey pine	15.1	15.1	8.0	Fair	Fair	Fair	broken top
90	<i>Pinus radiata</i>	Monterey pine	19.5	19.5	20.0	Fair	Good	Fair	slightly crowded
91	<i>Pinus radiata</i>	Monterey pine	21.6	21.6	20.0	Fair	Good	Fair	dominant, major lean
92	<i>Pinus canariensis</i>	Canary Island pine	9.8	9.8	6.7	Fair	Good	Fair	suppressed
93	<i>Pinus radiata</i>	Monterey pine	17.2	17.2	18.0	Fair	Good	Poor	broken top
94	<i>Eucalyptus leucoxylon</i>	white ironbark	7.1	7.1	2.0	Poor	Poor	Poor	small crown, branch dieback
95	<i>Eucalyptus leucoxylon</i>	white ironbark	11.3	11.3	12.0	Fair	Poor	Fair	sparse crown, branch dieback
96	<i>Eucalyptus leucoxylon</i>	white ironbark	6.3	6.3	4.7	Poor	Poor	Poor	suppressed, sparse crown, branch dieback
97	<i>Eucalyptus leucoxylon</i>	white ironbark	6, 6.3	12.3	8.7	Poor	Fair	Poor	suppressed, sparse crown, branch dieback



ID #	species	common name	DBH (in.)	sum DBH (in.)	average crown radius (ft.)	Overall Condition	Health	Structure	Notes
98	<i>Eucalyptus leucoxylon</i>	white ironbark	12.6	12.6	10.0	Fair	Fair	Good	sparse crown, branch dieback
99	<i>Eucalyptus leucoxylon</i>	white ironbark	9.2, 13.6	22.8	23.3	Fair	Fair	Fair	sparse crown, branch dieback
100	<i>Eucalyptus leucoxylon</i>	white ironbark	12.3	12.3	7.3	Poor	Poor	Poor	suppressed, branch dieback
101	<i>Eucalyptus globulus</i>	blue gum	8.6	8.6	5.7	Poor	Poor	Poor	suppressed
102	<i>Eucalyptus robusta</i>	brown gum	11.9, 11.1	23	9.3	Poor	Fair	Poor	major lean, branch dieback
103	<i>Eucalyptus globulus</i>	blue gum	25.4	25.4	16.7	Good	Good	Good	dominant, slightly crowded
104	<i>Eucalyptus globulus</i>	blue gum	7.4	7.4	9.3	Poor	Fair	Poor	suppressed, branch dieback
105	<i>Eucalyptus globulus</i>	blue gum	9.2, 11.6	20.8	18.3	Fair	Good	Fair	crowded
106	<i>Eucalyptus polyanthemus</i>	Australian beech	7.2, 7.8	15	8.7	Poor	Fair	Poor	nest, broken trunk, suppressed
107	<i>Eucalyptus robusta</i>	brown gum	15	15	14.3	Fair	Good	Fair	crowded
108	<i>Eucalyptus globulus</i>	blue gum	22.2	22.2	29.3	Fair	Good	Fair	branch dieback, included bark
109	<i>Eucalyptus robusta</i>	brown gum	21.8	21.8	17.3	Fair	Good	Fair	sparse crown
110	<i>Pinus radiata</i>	Monterey pine	8.2	8.2	6.7	Poor	Poor	Poor	sparse crown, major branch dieback
111	<i>Eucalyptus leucoxylon</i>	white ironbark	18.5	18.5	23.3	Fair	Poor	Fair	sparse crown, branch dieback
112	<i>Pinus radiata</i>	Monterey pine	20	20	16.0	Fair	Fair	Fair	exposed roots, branch dieback
113	<i>Eucalyptus leucoxylon</i>	white ironbark	16.3	16.3	9.7	Poor	Fair	Poor	very sparse crown, branch dieback

## General Mills Site - Tree Survey

April 25, 28, 2008



ID #	species	common name	DBH (in.)	sum DBH (in.)	average crown radius (ft.)	Overall Condition	Health	Structure	Notes
114	<i>Eucalyptus globulus</i>	blue gum	7.8, 6.3	14.1	4.3	Poor	Fair	Poor	suppressed, branch dieback
115	<i>Eucalyptus globulus</i>	blue gum	14.1	14.1	10.0	Poor	Poor	Poor	suppressed, branch dieback
116	<i>Eucalyptus globulus</i>	blue gum	35.4	35.4	31.7	Good	Good	Fair	dominant, trunk damage
117	<i>Eucalyptus globulus</i>	blue gum	13.8	13.8	11.0	Fair	Fair	Fair	crowded
118	<i>Eucalyptus globulus</i>	blue gum	14.3	14.3	10.0	Fair	Fair	Fair	crowded
119	<i>Eucalyptus globulus</i>	blue gum	27.3	27.3	25.0	Good	Good	Good	dominant, branch dieback, nest
120	<i>Eucalyptus globulus</i>	blue gum	20.5	20.5	25.0	Good	Good	Good	rigorous
121	<i>Eucalyptus robusta</i>	brown gum	13.2	13.2	13.3	Fair	Fair	Poor	major lean, suppressed
122	<i>Eucalyptus globulus</i>	blue gum	37.5	37.5	38.3	Good	Good	Good	dominant
123	<i>Eucalyptus globulus</i>	blue gum	8.2	8.2	6.0	Poor	Poor	Poor	suppressed, branch dieback
124	<i>Eucalyptus globulus</i>	blue gum	8.8	8.8	6.7	Poor	Poor	Poor	damaged crown
125	<i>Eucalyptus leucoxyton</i>	white ironbark	9.5	9.5	8.7	Poor	Poor	Poor	suppressed, damaged crown, sparse crown
126	<i>Eucalyptus leucoxyton</i>	white ironbark	17.4	17.4	15.3	Fair	Good	Fair	sparse crown, branch dieback
127	<i>Eucalyptus leucoxyton</i>	white ironbark	8.3	8.3	6.7	Fair	Fair	Fair	sparse crown, branch dieback, spindly
128	<i>Eucalyptus leucoxyton</i>	white ironbark	19.8	19.8	20.7	Fair	Fair	Good	branch dieback, sparse crown
129	<i>Eucalyptus leucoxyton</i>	white ironbark	6.3	6.3	2.7	Poor	Poor	Poor	sparse crown, branch dieback, almost dead

General Mills Site - Tree Survey

April 25, 28, 2008



ID #	species	common name	DBH (in.)	sum DBH (in.)	average crown radius (ft.)	Overall Condition	Health	Structure	Notes
130	<i>Acacia melanoxylon</i>	blackwood acacia	11.3, 8.4	19.7	9.7	Fair	Good	Fair	twig and small branch dieback
131	<i>Acacia melanoxylon</i>	blackwood acacia	8.7	8.7	7.3	Good	Good	Fair	twig dieback
132	<i>Acacia melanoxylon</i>	blackwood acacia	7, 4.3	11.3	5.7	Fair	Fair	Fair	crowded, sparse crown
133	<i>Acacia melanoxylon</i>	blackwood acacia	9.1	9.1	7.3	Poor	Poor	Poor	lean, branch dieback, sparse crown
134	<i>Pinus canariensis</i>	Canary Island pine	20.5	20.5	21.3	Good	Good	Good	dominant
135	<i>Acacia melanoxylon</i>	blackwood acacia	8.2, 10.6	18.8	12.0	Poor	Poor	Poor	sparse crown, trunk damage
136	<i>Acacia melanoxylon</i>	blackwood acacia	15.9, 10.3	26.2	14.7	Poor	Poor	Poor	lean, sparse crown, much branch dieback
137	<i>Acacia dealbata</i>	silver wattle	6.6	6.6	8.7	Fair	Good	Fair	suppressed, one-sided crown
138	<i>Pinus canariensis</i>	Canary Island pine	8.7	8.7	6.0	Good	Good	Good	vigorous
139	<i>Acacia dealbata</i>	silver wattle	14.7	14.7	12.0	Poor	Poor	Poor	sparse crown, branch and twig dieback, poor foliage
140	<i>Acacia melanoxylon</i>	blackwood acacia	10.3	10.3	12.0	Fair	Good	Fair	lean, dense crown
141	<i>Pinus canariensis</i>	Canary Island pine	19.9	19.9	19.0	Good	Good	Fair	dominant, broken top
142	<i>Pinus canariensis</i>	Canary Island pine	20.9	20.9	14.3	Fair	Good	Poor	lean, one-sided crown
143	<i>Acacia melanoxylon</i>	blackwood acacia	8.6, 14.7	23.3	12.3	Fair	Good	Poor	large branch and crown dieback
144	<i>Acacia melanoxylon</i>	blackwood acacia	17.5	17.5	4.0	Poor	Poor	Poor	sparse crown, branch dieback, almost dead
145	<i>Acacia melanoxylon</i>	blackwood acacia	6.2, 4.8	11.0	8.0	Good	Good	Good	young and vigorous

General Mills Site - Tree Survey

April 25, 28, 2008



ID #	species	common name	DBH (in.)	sum DBH (in.)	average crown radius (ft.)	Overall Condition	Health	Structure	Notes
146	<i>Quercus agrifolia</i>	coast live oak	9.4	9.4	9.7	Good	Good	Fair	uneven crown
147	<i>Acacia dealbata</i>	silver wattle	17.1	17.1	27.0	Fair	Fair	Fair	twig dieback, sparse crown, lean, crows nesting
148	<i>Acacia melanoxylon</i>	blackwood	17.8	17.8	15.0	Poor	Fair	Poor	much branch dieback, small uneven crown
149	<i>Acacia melanoxylon</i>	blackwood	8.1	8.1	9.7	Poor	Poor	Poor	major trunk damage, branch dieback
150	<i>Acacia melanoxylon</i>	blackwood	9.2	9.2	7.3	Good	Good	Good	minor trunk bend
151	<i>Acacia melanoxylon</i>	blackwood	27.4	27.4	22.7	Fair	Good	Fair	branch dieback, lean
152	<i>Acacia melanoxylon</i>	blackwood	12.7	12.7	13.0	Good	Good	Fair	lean, slightly suppressed
153	<i>Acacia melanoxylon</i>	blackwood	18.2	18.2	13.7	Good	Good	Good	nests
154	<i>Acacia melanoxylon</i>	blackwood	7.0	7.0	6.3	Fair	Good	Fair	slightly suppressed
155	<i>Acacia melanoxylon</i>	blackwood	26.5	26.5	16.0	Fair	Fair	Poor	branch dieback, sparse crown, lean
156	<i>Phoenix canariensis</i>	Canary Island date palm			20.0	Good	Good	Good	slightly suppressed
157	<i>Quercus agrifolia</i>	coast live oak	6.5	6.5	5.7	Poor	Poor	Poor	overcome by wisteria bush, small crown
158	<i>Platanus acerifolia</i>	London plane	21.1	21.1	22.7	Good	Good	Good	trash in tree
159	<i>Prunus demissa</i>	western choke cherry	9.2	9.2	12.0	Good	Good	Good	twig dieback
160	<i>Eucalyptus globulus</i>	blue gum	13.3, 8.9	22.2	6.0	Poor	Poor	Poor	sparse crown, branch dieback, lean
161	<i>Juglans regia</i>	English walnut	8, 6.4	14.4	14.0	Poor	Poor	Fair	poor crown, sclerosis in leaves
162	<i>Juglans regia</i>	English walnut	9.0	9.0	13.3	Fair	Good	Fair	trunk bends

General Mills Site - Tree Survey

April 25, 28, 2008



ID #	species	common name	DBH (in.)	sum DBH (in.)	average crown radius (ft.)	Overall Condition	Health	Structure	Notes
163	<i>Robinia hispida</i>	rose locust	9.6	9.6	18.0	Fair	Good	Fair	spindly, covered in ivy
	<i>Heteromeles</i>								
164	<i>arbutifolia</i>	toyon	7.3, 5	12.3	5.7	Poor	Poor	Poor	almost dead, broken top
		Oregon crab							
165	<i>Malus fusca</i>	apple	8, 8.2	16.2	6.0	Poor	Fair	Poor	major trunk cavities
	<i>Calocedrus</i>								
166	<i>decurrens</i>	incense cedar	24.7	24.7	14.0	Fair	Fair	Fair	forked trunk, sparse crown
	<i>Acacia</i>	blackwood							
167	<i>melanoxylon</i>	acacia	22.0	22.0	10.0	Poor	Poor	Poor	overcome by ivy, major lean
	<i>Rhamnus</i>	casacara	8.7, 6.2, 5.1,						
168	<i>purshiana</i>	buckthorn	5.1	25.1	8.3	Fair	Good	Fair	spindly, overgrown
	<i>Washingtonia</i>	Mexican fan							
169	<i>gracilis</i>	palm	palm		8.7	Good	Good	Good	
	<i>Washingtonia</i>	Mexican fan							
170	<i>gracilis</i>	palm	palm		8.7	Good	Good	Good	
	<i>Betula pendula</i>	ornamental							
171	<i>gracilis</i>	birch	8.5	8.5	4.0	Poor	Poor	Poor	trunk damage, sparse crown
172	<i>Pyrus calleryana</i>	callery pear	9.2	9.2	10.0	Good	Good	Good	ivy on trunk
173	<i>Pyrus calleryana</i>	callery pear	9.7	9.7	10.0	Good	Good	Good	
174	<i>Pyrus calleryana</i>	callery pear	7.4	7.4	10.0	Good	Good	Good	
175	<i>Pyrus calleryana</i>	callery pear	6.4	6.4	5.0	Good	Good	Good	
	<i>Calocedrus</i>								
176	<i>decurrens</i>	incense cedar	18.3	18.3	8.7	Poor	Poor	Fair	sparse crown, ivy on trunk
	<i>Calocedrus</i>								
177	<i>decurrens</i>	incense cedar	14.2	14.2	8.7	Poor	Poor	Fair	sparse crown, ivy on trunk
	<i>Calocedrus</i>								
178	<i>decurrens</i>	incense cedar	10.6	10.6	6.0	Poor	Poor	Fair	sparse crown, suppressed
	<i>Calocedrus</i>								
179	<i>decurrens</i>	incense cedar	14.4	14.4	6.0	Poor	Poor	Fair	sparse crown, suppressed
	<i>Acacia</i>	blackwood							
180	<i>melanoxylon</i>	acacia	8.7	8.7	7.7	Fair	Good	Fair	lean, split trunk

General Mills Site - Tree Survey

April 25, 28, 2008



ID #	species	common name	DBH (in.)	sum DBH (in.)	average crown radius (ft.)	Overall Condition	Health	Structure	Notes
181	<i>Eucalyptus robusta</i>	brown gum	8.6, 13.1, 12.2	33.9	20.7	Fair	Fair	Fair	major branch failure, trunk damage
182	<i>Eucalyptus robusta</i>	brown gum	7.2	7.2	3.3	Poor	Poor	Poor	small crown, trunk damage, lean
183	<i>Acacia dealbata</i>	silver wattle	9.5	9.5	14.0	Fair	Good	Poor	major lean
184	<i>Acacia dealbata</i>	silver wattle	7.1	7.1	6.0	Poor	Poor	Poor	branch dieback, trunk damage, sparse crown
185	<i>Acacia dealbata</i>	silver wattle	6.3	6.3	3.0	Poor	Poor	Poor	branch dieback, trunk damage, sparse crown
186	<i>Acacia dealbata</i>	silver wattle	14.0	14.0	10.7	Poor	Poor	Poor	branch dieback, trunk damage, sparse crown
187	<i>Acacia dealbata</i>	silver wattle	8.3, 13.3	21.6	15.7	Poor	Poor	Poor	suppressed, lean
188	<i>Eucalyptus globulus</i>	blue gum	22.2	22.2	16.0	Fair	Fair	Fair	small crown, lean
189	<i>Eucalyptus camaldulensis</i>	red gum	10.3	10.3	8.0	Fair	Fair	Fair	suppressed
190	<i>Eucalyptus camaldulensis</i>	red gum	19.5	19.5	12.3	Fair	Fair	Fair	branch dieback, sparse crown
191	<i>Eucalyptus camaldulensis</i>	red gum	32.2	32.2	25.0	Good	Good	Good	dominant
192	<i>Acacia dealbata</i>	silver wattle	7.6	7.6	15.3	Fair	Fair	Fair	slightly suppressed
193	<i>Eucalyptus robusta</i>	brown gum	12.4	12.4	13.0	Fair	Good	Poor	major lean
194	<i>Eucalyptus leucoxydon</i>	white ironbark	16.3	16.3	12.0	Poor	Fair	Poor	major branch dieback, small crown, ivy
195	<i>Eucalyptus leucoxydon</i>	white ironbark	22.9	22.9	30.0	Fair	Fair	Good	dominant, small branch dieback
196	<i>Eucalyptus leucoxydon</i>	white ironbark	12.3	12.3	12.7	Fair	Fair	Fair	ivy, small branch dieback, sparse crown
197	<i>Eucalyptus leucoxydon</i>	white ironbark	14.7	14.7	8.7	Poor	Poor	Poor	major lean, almost dead

General Mills Site - Tree Survey

April 25, 28, 2008



ID #	species	common name	DBH (in.)	sum DBH (in.)	average crown radius (ft.)	Overall Condition	Health	Structure	Notes
198	<i>Eucalyptus leucoxyton</i>	white ironbark	10.0	10.0	4.7	Fair	Fair	Fair	ivy, branch dieback, suppressed
199	<i>Eucalyptus leucoxyton</i>	white ironbark	20.5	20.5	16.0	Good	Good	Good	dominant, slight lean
200	<i>Eucalyptus leucoxyton</i>	white ironbark	9.6	9.6	4.7	Poor	Poor	Poor	suppressed, forked trunk
201	<i>Eucalyptus leucoxyton</i>	white ironbark	16.5	16.5	11.3	Fair	Good	Fair	medium branch dieback
202	<i>Eucalyptus leucoxyton</i>	white ironbark	8.5, 8.3, 4	20.8	14.0	Poor	Poor	Poor	burned and broken trunk
203	<i>Eucalyptus camaldulensis</i>	red gum	6.5, 4.9	11.4	2.3	Poor	Poor	Poor	very damaged, almost dead
204	<i>Eucalyptus leucoxyton</i>	white ironbark	15.7, 15.5	31.2	14.7	Poor	Fair	Poor	burned trunk
205	<i>Eucalyptus leucoxyton</i>	white ironbark	12.8, 12.3	25.1	14.0	Fair	Fair	Fair	branch dieback
206	<i>Eucalyptus leucoxyton</i>	white ironbark	15.5	15.5	7.0	Poor	Poor	Poor	branched dieback, damaged trunk
207	<i>Eucalyptus leucoxyton</i>	white ironbark	14.0	14.0	7.0	Poor	Poor	Poor	branched dieback, damaged trunk
208	<i>Eucalyptus leucoxyton</i>	white ironbark	15.3	15.3	3.0	Poor	Poor	Poor	almost dead
209	<i>Eucalyptus leucoxyton</i>	white ironbark	15.3, 11.3	26.6	6.7	Poor	Poor	Poor	almost dead
210	<i>Acacia dealbata</i>	silver wattle	11.3, 7.4	18.7	16.0	Fair	Fair	Fair	lean
211	<i>Acacia dealbata</i>	silver wattle	7.3, 5, 5.8, 3.6	21.7	16.7	Fair	Fair	Fair	suppressed
212	<i>Acacia dealbata</i>	silver wattle	9.4, 8.4	17.8	14.3	Fair	Fair	Fair	lean
213	<i>Eucalyptus camaldulensis</i>	red gum	6.5	6.5	5.3	Fair	Fair	Fair	suppressed
214	<i>Pinus canariensis</i>	Canary Island pine	12.6	12.6	6.0	Fair	Good	Fair	one-sided crown

General Mills Site - Tree Survey

April 25, 28, 2008



ID #	species	common name	DBH (in.)	sum DBH (in.)	average crown radius (ft.)	Overall Condition	Health	Structure	Notes
		Canary Island							
215	<i>Pinus canariensis</i>	pine	15.2	15.2	12.0	Fair	Fair	Poor	dominant
	<i>Acacia</i>	blackwood							
216	<i>melanoxylon</i>	acacia	16.3	16.3	8.0	Poor	Poor	Fair	very sparse crown, branch dieback
	<i>Eucalyptus</i>								
217	<i>globulus</i>	blue gum	12.2	12.2	10.0	Fair	Fair	Fair	
	<i>Eucalyptus</i>								
218	<i>camaldulensis</i>	red gum	10.3, 10.3	20.6	9.3	Fair	Fair	Fair	major lean
	<i>Eucalyptus</i>								
219	<i>camaldulensis</i>	red gum	10.3	10.3	8.0	Fair	Good	Fair	sparse, small crown
	<i>Eucalyptus</i>								
220	<i>camaldulensis</i>	red gum	11.3	11.3	8.0	Fair	Fair	Fair	branch dieback, small crown
	<i>Eucalyptus</i>								
221	<i>camaldulensis</i>	red gum	7.5, 6.9	14.4	8.0	Poor	Poor	Poor	twig and branch dieback, sparse crown
	<i>Eucalyptus</i>								
222	<i>camaldulensis</i>	red gum	10.6	10.6	3.7	Fair	Fair	Poor	spindly
	<i>Eucalyptus</i>								
223	<i>camaldulensis</i>	red gum	7.1	7.1	5.0	Fair	Fair	Fair	spindly, included bark
	<i>Eucalyptus</i>	peppermint gum							
224	<i>pulchella</i>	gum	9.5	9.5	10.0	Fair	Fair	Good	small crown
		Canary Island							
225	<i>Pinus canariensis</i>	pine	12.8	12.8	15.3	Fair	Good	Fair	trunk damage
	<i>Acacia</i>	blackwood							
226	<i>melanoxylon</i>	acacia	15.8, 10.9	26.7	15.0	Poor	Fair	Poor	fallen down, trunk damage
	<i>Eucalyptus</i>								
227	<i>camaldulensis</i>	red gum	8.6	8.6	8.0	Poor	Poor	Poor	almost dead, trunk damage
	<i>Eucalyptus</i>								
228	<i>camaldulensis</i>	red gum	11.9	11.9	13.3	Fair	Fair	Fair	lean, branch damage
	<i>Eucalyptus</i>								
229	<i>camaldulensis</i>	red gum	8.3	8.3	4.0	Fair	Fair	Poor	spindly, small crown
	<i>Eucalyptus</i>								
230	<i>camaldulensis</i>	red gum	9.5	9.5	10.0	Fair	Fair	Fair	sparse crown



General Mills Site - Tree Survey

April 25, 28, 2008



ID #	species	common name	DBH (in.)	sum DBH (in.)	average crown radius (ft.)	Overall Condition	Health	Structure	Notes
231	<i>Eucalyptus camaldulensis</i>	red gum	13.6	13.6	3.7	Poor	Poor	Poor	very damaged trunk and crown
232	<i>Eucalyptus camaldulensis</i>	red gum	8.8	8.8	1.7	Poor	Poor	Poor	major trunk damage
233	<i>Eucalyptus camaldulensis</i>	red gum	7.2	7.2	2.0	Poor	Poor	Poor	sparse crown, broken branches
234	<i>Eucalyptus camaldulensis</i>	red gum	8.6	8.6	5.3	Poor	Poor	Poor	sparse crown, broken branches
235	<i>Eucalyptus camaldulensis</i>	red gum	12.6	12.6	7.3	Poor	Poor	Poor	sparse crown, broken branches
236	<i>Acacia melanoxylon</i>	blackwood acacia	11.5	11.5	14.0	Fair	Fair	Fair	
237	<i>Eucalyptus pulchella</i>	peppermint gum	13.2	13.2	10.0	Poor	Poor	Poor	sparse crown, branch dieback
238	<i>Acacia melanoxylon</i>	blackwood acacia	14.8	14.8	0.7	Poor	Poor	Poor	almost dead
239	<i>Acacia melanoxylon</i>	blackwood acacia	6.0	6.0	5.3	Poor	Poor	Poor	sparse crown, branch dieback
240	<i>Acacia melanoxylon</i>	blackwood acacia	6.6	6.6	8.7	Poor	Poor	Poor	sparse crown, branch dieback
241	<i>Acacia melanoxylon</i>	blackwood acacia	7.4	7.4	10.0	Poor	Poor	Poor	sparse crown, branch dieback
242	<i>Acacia melanoxylon</i>	blackwood acacia	17.5	17.5	16.7	Good	Good	Good	
243	<i>Acacia melanoxylon</i>	blackwood acacia	24.8	24.8	17.0	Fair	Good	Fair	some trunk damage
244	<i>Acacia melanoxylon</i>	blackwood acacia	14.7	14.7	10.7	Good	Good	Good	some trunk damage
245	<i>Acacia melanoxylon</i>	blackwood acacia	11.9	11.9	10.0	Poor	Fair	Poor	trunk split
246	<i>Acacia melanoxylon</i>	blackwood acacia	8.5	8.5	9.3	Fair	Fair	Poor	curvy trunk

General Mills Site - Tree Survey

April 25, 28, 2008



ID #	species	common name	DBH (in.)	sum DBH (in.)	average crown radius (ft.)	Overall Condition	Health	Structure	Notes
247	<i>Pinus radiata</i>	Monterey pine	19.8	19.8	16.7	Fair	Good	Fair	branch dieback
248	<i>Pinus radiata</i>	Monterey pine	19.6	19.6	18.0	Fair	Good	Fair	forked top, dense foliage
249	<i>Pinus radiata</i>	Monterey pine	20.0	20.0	16.7	Fair	Good	Fair	dense foliage
250	<i>Quercus agrifolia</i>	coast live oak	7.3, 7.6	14.9	12.7	Fair	Good	Fair	
251	<i>Pinus halepensis</i>	aleppo pine	17.0	17.0	10.3	Fair	Fair	Fair	trunk damage, small crown, included fenceline
252	<i>Eucalyptus robusta</i>	brown gum	18.8	50.6	21.3	Fair	Fair	Fair	branch dieback, full crown
253	<i>Eucalyptus globulus</i>	blue gum	31.8	31.8	30.0	Fair	Fair	Fair	branch dieback, trunk damage
254	<i>Eucalyptus globulus</i>	blue gum	33, 39.1, 26	98.1	25.0	Fair	Good	Fair	branch dieback, trunk lean
255	<i>Eucalyptus globulus</i>	blue gum	54.8	54.8	41.7	Fair	Good	Fair	branch dieback, trunk lean
256	<i>Eucalyptus globulus</i>	blue gum	10.9, 8, 26.1	45.0	35.7	Fair	Fair	Good	dominant, branch dieback
257	<i>Calocedrus decurrens</i>	incense cedar	21.2	21.2	12.0	Fair	Good	Fair	sparse crown, branch dieback
258	<i>Eucalyptus globulus</i>	blue gum	11.6, 14.5, 5, 19.2, 26.1, 27	103.4	55.0	Fair	Good	Fair	major lean
259	<i>Pinus radiata</i>	Monterey pine	6.8	6.8	6.0	Fair	Fair	Fair	suppressed
260	<i>Eucalyptus globulus</i>	blue gum	20.5	20.5	23.3	Fair	Fair	Fair	major lean, branch dieback
261	<i>Acacia melanoxylon</i>	blackwood	10.6	10.6	10.7	Fair	Good	Fair	curvy trunk

General Mills Site - Tree Survey

April 25, 28, 2008



ID #	species	common name	DBH (in.)	sum DBH (in.)	average crown radius (ft.)	Overall Condition	Health	Structure	Notes
262	<i>Pinus radiata</i>	Monterey pine	7.5	7.5	5.3	Poor	Fair	Poor	major lean, sparse crown
	<i>Acacia</i>	blackwood							
263	<i>melanoxylon</i>	acacia	8.7	8.7	11.3	Fair	Good	Fair	bent trunk
264	<i>Pinus radiata</i>	Monterey pine	9.0	9.0	9.7	Poor	Fair	Poor	growing towards power lines
	<i>Eucalyptus</i>								
265	<i>globulus</i>	blue gum	26.1, 21.8	47.9	40.0	Good	Good	Good	dominant, branch dieback
	<i>Eucalyptus</i>								
266	<i>globulus</i>	blue gum	35.3, 19.7	55.0	13.3	Fair	Good	Fair	crowded, branch dieback
267	<i>Pinus halepensis</i>	aleppo pine	8.8	8.8	6.7	Poor	Fair	Poor	broken top, branch dieback
	<i>Acacia</i>	blackwood							
268	<i>melanoxylon</i>	acacia	8.1	8.1	10.3	Fair	Good	Fair	stunted crown
269	<i>Pinus halepensis</i>	aleppo pine	7.3	7.3	6.0	Poor	Poor	Poor	sparse crown, poor foliage, trunk damage
	<i>Acacia</i>	blackwood							
270	<i>melanoxylon</i>	acacia	8.1	8.1	10.0	Fair	Good	Poor	broken top
271	<i>Quercus agrifolia</i>	coast live oak	6.4, 6.7	13.1	14.0	Fair	Good	Fair	
272	<i>Quercus agrifolia</i>	coast live oak	10.4, 6.2	16.6	14.7	Fair	Good	Fair	
273	<i>Quercus agrifolia</i>	coast live oak	12.9	12.9	16.7	Fair	Good	Fair	
274	<i>Pinus halepensis</i>	aleppo pine	11.0	11.0	8.0	Poor	Poor	Fair	stressed, lean
275	<i>Quercus agrifolia</i>	coast live oak	6.8	6.8	6.7	Fair	Fair	Fair	suppressed, lean
276	<i>Pinus halepensis</i>	aleppo pine	16.2	16.2	13.0	Poor	Poor	Fair	stressed
		Canary Island							
277	<i>Pinus canariensis</i>	pine	6.7, 6.2	12.9	8.0	Fair	Fair	Fair	forked trunk, nice foliage
278	<i>Pinus radiata</i>	Monterey pine	19.3	19.3	13.3	Fair	Good	Poor	broken top, branch dieback
	<i>Eucalyptus</i>								
279	<i>globulus</i>	blue gum	25.8	25.8	35.0	Fair	Good	Fair	branch dieback, crowded

General Mills Site - Tree Survey

April 25, 28, 2008



ID #	species	common name	DBH (in.)	sum DBH (in.)	average crown radius (ft.)	Overall Condition	Health	Structure	Notes
280	<i>Eucalyptus robusta</i>	brown gum	18.8, 10.6, 12.7	42.1	18.0	Poor	Fair	Poor	suppressed
281	<i>Eucalyptus globulus</i>	blue gum	18.8, 5.6	24.4	11.7	Fair	Good	Poor	crowded, small crown
282	<i>Eucalyptus robusta</i>	brown gum	15	15	12.3	Fair	Fair	Poor	crowded, small crown, lean
283	<i>Eucalyptus globulus</i>	blue gum	30.3, 6	36.3	13.3	Good	Good	Good	dominant
284	<i>Eucalyptus globulus</i>	blue gum	27.5	27.5	22.7	Good	Good	Good	dominant
285	<i>Eucalyptus globulus</i>	blue gum	24.5	24.5	20.7	Fair	Fair	Fair	branch dieback, herbivory
286	<i>Eucalyptus globulus</i>	blue gum	32	32	25.0	Fair	Fair	Fair	sparse crown, branch dieback
287	<i>Eucalyptus robusta</i>	brown gum	36, 9.1, 6.3	51.4	22.3	Fair	Fair	Fair	sparse crown, branch dieback
288	<i>Eucalyptus camaldulensis</i>	red gum	8.2	8.2	6.7	Poor	Poor	Poor	trunk damage
289	<i>Eucalyptus globulus</i>	blue gum	7.3	7.3	4.0	Poor	Poor	Poor	small crown
290	<i>Eucalyptus globulus</i>	blue gum	12, 7.1	19.1	9.3	Fair	Good	Fair	small branch dieback
291	<i>Eucalyptus globulus</i>	blue gum	15.7, 9	24.7	17.7	Fair	Good	Fair	small branch dieback
292	<i>Eucalyptus globulus</i>	blue gum	17	17	7.3	Fair	Fair	Fair	sparse crown, small branch dieback
293	<i>Eucalyptus globulus</i>	blue gum	9.4	9.4	4.0	Poor	Fair	Poor	suppressed, broken top
294	<i>Eucalyptus globulus</i>	blue gum	7.3	7.3	4.7	Poor	Fair	Poor	suppressed, broken top
295	<i>Eucalyptus globulus</i>	blue gum	10.8	10.8	8.0	Poor	Fair	Poor	trunk damage, sparse crown

General Mills Site - Tree Survey

April 25, 28, 2008



ID #	species	common name	DBH (in.)	sum DBH (in.)	average crown radius (ft.)	Overall Condition	Health	Structure	Notes
296	<i>Eucalyptus globulus</i>	blue gum	14.1	14.1	6.7	Poor	Poor	Poor	trunk damage, sparse crown
297	<i>Eucalyptus leucoxylon</i>	white ironbark	15.4, 12.1	27.5	10.7	Poor	Poor	Poor	trunk damage, sparse crown
298	<i>Eucalyptus polyanthemos</i>	Australian beech	16.5	16.5	10.7	Poor	Poor	Poor	sparse crown, major branch dieback
299	<i>Eucalyptus leucoxylon</i>	white ironbark	18.8	18.8	21.0	Fair	Fair	Fair	trunk damage, medium branch dieback
300	<i>Eucalyptus robusta</i>	brown gum	10.1, 6.9, 6.7	23.7	13.3	Fair	Fair	Fair	many small stems from stump, small crown
301	<i>Eucalyptus globulus</i>	blue gum	25.5	25.5	14.0	Fair	Fair	Fair	sparse crown, crowded, branch dieback
302	<i>Eucalyptus globulus</i>	blue gum	6, 7.6	13.6	11.7	Poor	Fair	Poor	trunk damage, suppressed
303	<i>Eucalyptus globulus</i>	blue gum	30.5	30.5	19.3	Fair	Fair	Poor	branch and crown dieback
304	<i>Eucalyptus globulus</i>	blue gum	28.8	28.8	16.0	Fair	Fair	Poor	large branch and crown dieback
305	<i>Eucalyptus globulus</i>	blue gum	10.1, 9.5, 6.6	26.2	12.0	Poor	Fair	Poor	suppressed, branch dieback
306	<i>Eucalyptus globulus</i>	blue gum	33.5	33.5	18.3	Fair	Fair	Fair	dominant
307	<i>Eucalyptus globulus</i>	blue gum	31.8	31.8	24.7	Fair	Fair	Fair	lean, branch dieback
308	<i>Eucalyptus globulus</i>	blue gum	10.1	10.1	9.3	Poor	Fair	Poor	suppressed, lean, branch dieback
309	<i>Eucalyptus camaldulensis</i>	red gum	10.5, 16.6	27.1	9.3	Poor	Fair	Poor	broken top, lean, trunk damage
310	<i>Eucalyptus globulus</i>	blue gum	10, 8.5	18.5	13.0	Poor	Poor	Fair	crown dieback, sparse crown, bark bleeding
311	<i>Eucalyptus globulus</i>	blue gum	6.7, 18.4	25.1	16.3	Fair	Good	Fair	thin crown

General Mills Site - Tree Survey

April 25, 28, 2008



ID #	species	common name	DBH (in.)	sum DBH (in.)	average crown radius (ft.)	Overall Condition	Health	Structure	Notes
312	<i>Eucalyptus globulus</i>	blue gum	30.5	30.5	18.0	Fair	Fair	Good	dominant, twig dieback
313	<i>Eucalyptus globulus</i>	blue gum	9.2	9.2	11.3	Poor	Fair	Poor	from stump sprout, sparse crown
314	<i>Eucalyptus globulus</i>	blue gum	35.0	35.0	28.3	Good	Fair	Good	branch dieback
315	<i>Eucalyptus polyanthemos</i>	Australian beech	10.9	10.9	6.7	Poor	Poor	Poor	suppressed, branch dieback
316	<i>Eucalyptus polyanthemos</i>	Australian beech	14.1	14.1	9.3	Fair	Fair	Poor	crowded, branch dieback
317	<i>Eucalyptus polyanthemos</i>	Australian beech	13.7	13.7	9.3	Poor	Fair	Poor	branch dieback, bark bleeding
318	<i>Eucalyptus pulchella</i>	peppermint gum	18.1, 6.2	24.3	15.3	Fair	Fair	Fair	branch dieback, bark bleeding, wind damage
319	<i>Eucalyptus leucoxylon</i>	white ironbark	12.3	12.3	7.0	Poor	Fair	Poor	lean, branch dieback, crowded, trunk damage
320	<i>Eucalyptus leucoxylon</i>	white ironbark	23.6	23.6	25.3	Fair	Fair	Fair	branch dieback, sparse crown, crown damage
321	<i>Eucalyptus leucoxylon</i>	white ironbark	9.1, 7.8, 16.8	33.7	22.0	Fair	Fair	Fair	branch dieback, sparse crown, crown damage
322	<i>Eucalyptus leucoxylon</i>	white ironbark	10.2, 14.6	24.8	14.3	Fair	Fair	Fair	branch dieback, sparse crown
323	<i>Eucalyptus leucoxylon</i>	white ironbark	13.0	13.0	16.7	Poor	Poor	Fair	trunk damage, sparse crown, branch dieback
324	<i>Eucalyptus leucoxylon</i>	white ironbark	14.6	14.6	8.0	Poor	Fair	Poor	trunk damage, sparse crown, branch dieback
325	<i>Eucalyptus leucoxylon</i>	white ironbark	7.2	7.2	7.3	Poor	Fair	Poor	suppressed, sparse crown
326	<i>Eucalyptus pulchella</i>	peppermint gum	12.2	12.2	8.7	Fair	Fair	Fair	trunk damage, branch dieback
327	<i>Eucalyptus globulus</i>	blue gum	28.2	28.2	22.0	Fair	Fair	Fair	branch dieback, crowded

General Mills Site - Tree Survey

April 25, 28, 2008



ID #	species	common name	DBH (in.)	sum DBH (in.)	average crown radius (ft.)	Overall Condition	Health	Structure	Notes
328	<i>Eucalyptus globulus</i>	blue gum	22.5	22.5	14.0	Fair	Fair	Fair	branch dieback, crowded
329	<i>Eucalyptus globulus</i>	blue gum	25.8	25.8	16.0	Poor	Fair	Poor	branch dieback, crowded, major lean
330	<i>Eucalyptus globulus</i>	blue gum	13.4	13.4	14.0	Poor	Fair	Poor	major lean, branch dieback
331	<i>Eucalyptus camaldulensis</i>	red gum	16.5	16.5	15.3	Fair	Good	Poor	suppressed
332	<i>Eucalyptus globulus</i>	blue gum	21.2	21.2	18.7	Fair	Fair	Good	branch dieback, crowded
333	<i>Eucalyptus globulus</i>	blue gum	24.2	24.2	14.7	Fair	Fair	Fair	branch dieback, crowded, lean
334	<i>Eucalyptus globulus</i>	blue gum	19.8	19.8	17.3	Fair	Fair	Good	crowded, bark bleeding
335	<i>Eucalyptus globulus</i>	blue gum	16.2, 19.8	36.0	13.3	Poor	Fair	Poor	trunk damage, suppressed
336	<i>Eucalyptus leucoxylon</i>	white ironbark	7.5, 11.2	18.7	8.7	Fair	Fair	Fair	sparse crown, trunk damage, branch dieback
337	<i>Eucalyptus leucoxylon</i>	white ironbark	10.7	10.7	7.3	Fair	Fair	Fair	sparse crown, trunk damage, branch dieback, crowded
338	<i>Eucalyptus globulus</i>	blue gum	25.0	25.0	16.7	Fair	Fair	Fair	branch dieback, crowded, lean
339	<i>Eucalyptus globulus</i>	blue gum	20.5	20.5	12.0	Fair	Fair	Fair	branch dieback, crowded, lean
340	<i>Eucalyptus globulus</i>	blue gum	35.5	35.5	22.7	Fair	Good	Fair	lean, branch dieback, robust crown
341	<i>Eucalyptus globulus</i>	blue gum	25.8	25.8	16.0	Fair	Fair	Good	branch dieback, crowded
342	<i>Eucalyptus globulus</i>	blue gum	31.8	31.8	19.3	Good	Good	Good	crowded
343	<i>Eucalyptus globulus</i>	blue gum	35.8	35.8	18.7	Fair	Good	Fair	lean, branch dieback

General Mills Site - Tree Survey

April 25, 28, 2008



ID #	species	common name	DBH (in.)	sum DBH (in.)	average crown radius (ft.)	Overall Condition	Health	Structure	Notes
	<i>Eucalyptus</i>								
344	<i>globulus</i>	blue gum	29.5	29.5	17.0	Fair	Good	Fair	major lean
	<i>Eucalyptus</i>								
345	<i>globulus</i>	blue gum	28.0	28.0	16.0	Good	Good	Good	small branch dieback
346	<i>Pinus radiata</i>	Monterey pine	6.3	6.3	8.0	Good	Good	Good	
347	<i>Pinus radiata</i>	Monterey pine	6.1	6.1	6.0	Fair	Good	Poor	pitchy
348	<i>Pinus radiata</i>	Monterey pine	6.8	6.8	6.0	Good	Good	Good	
349	<i>Pinus radiata</i>	Monterey pine	6.1	6.1	6.0	Good	Good	Good	
350	<i>Pinus radiata</i>	Monterey pine	9.2	9.2	9.3	Good	Good	Good	
351	<i>Pinus radiata</i>	Monterey pine	6.3	6.3	6.3	Fair	Fair	Good	pitchy
	<i>Eucalyptus</i>								
352	<i>globulus</i>	blue gum	24.8	24.8	18.0	Good	Good	Fair	branch dieback
<b>353</b>	<i>Pinus radiata</i>	Monterey pine	16.5	16.5	6.0	Fair	Good	Fair	crowded, lean, broken top
<b>354</b>	<i>Pinus radiata</i>	Monterey pine	17.9	17.9	10.7	Fair	Good	Fair	crowded, lean, broken top
	<i>Eucalyptus</i>								
<b>355</b>	<i>globulus</i>	blue gum	22, 11.4	33.4	12.7	Fair	Fair	Fair	branch dieback, lean
	<i>Eucalyptus</i>								
<b>356</b>	<i>leucoxyton</i>	white ironbark	15.4, 18.1	33.5	17.3	Fair	Fair	Fair	branch dieback, sparse crown
<b>357</b>	<i>Pinus halepensis</i>	aleppo pine	12.0	12.0	10.7	Poor	Poor	Poor	major lean, sparse crown
	<i>Eucalyptus</i>								
<b>358</b>	<i>globulus</i>	blue gum	9.6	9.6	7.3	Poor	Fair	Poor	spindly, sparse crown
	<i>Eucalyptus</i>								
<b>359</b>	<i>globulus</i>	blue gum	9.5	9.5	6.7	Poor	Poor	Poor	spindly, sparse crown



ID #	species	common name	DBH (in.)	sum DBH (in.)	average crown radius (ft.)	Overall Condition	Health	Structure	Notes
	<i>Eucalyptus</i>								
360	<i>globulus</i>	blue gum	6.9	6.9	4.0	Poor	Fair	Poor	suppressed, spindly
	<i>Eucalyptus</i>								
361	<i>globulus</i>	blue gum	6.6	6.6	4.7	Poor	Fair	Poor	suppressed, spindly
	<i>Eucalyptus</i>								
362	<i>globulus</i>	blue gum	25.8	25.8	8.7	Fair	Fair	Fair	dominant, small crown
	<i>Eucalyptus</i>								
363	<i>globulus</i>	blue gum	7.3	7.3	6.0	Poor	Fair	Poor	suppressed
	<i>Eucalyptus</i>								
364	<i>Pinus radiata</i>	Monterey pine	19.5	19.5	12.7	Fair	Fair	Fair	broken top, branch dieback
	<i>Eucalyptus</i>								
365	<i>globulus</i>	blue gum	24.8	24.8	17.3	Good	Good	Good	dominant, trunk damage
	<i>Eucalyptus</i>								
366	<i>globulus</i>	blue gum	25.3	25.3	18.0	Good	Good	Good	
	<i>Eucalyptus</i>								
367	<i>Pinus radiata</i>	Monterey pine	13.2	13.2	7.3	Poor	Fair	Poor	broken top, small crown
	<i>Eucalyptus</i>								
368	<i>Pinus radiata</i>	Monterey pine	14.4	14.4	8.7	Good	Good	Good	branch dieback
	<i>Eucalyptus</i>								
369	<i>globulus</i>	blue gum	28.9	28.9	20.0	Poor	Fair	Poor	branch dieback, small crown, broken top
	<i>Eucalyptus</i>								
370	<i>Pinus radiata</i>	Monterey pine	25.5	25.5	14.0	Fair	Good	Fair	major lean
	<i>Eucalyptus</i>								
371	<i>globulus</i>	blue gum	10.2	10.2	10.0	Poor	Fair	Poor	spindly, small crown
	<i>Eucalyptus</i>								
372	<i>globulus</i>	blue gum	13.2	13.2	11.3	Fair	Fair	Fair	spindly, small crown
	<i>Eucalyptus</i>								
373	<i>globulus</i>	blue gum	17.8	17.8	8.7	Fair	Fair	Fair	sparse crown, spindly
	<i>Eucalyptus</i>								
374	<i>globulus</i>	blue gum	10.6, 6	16.6	8.7	Fair	Fair	Fair	sparse crown, spindly
	<i>Eucalyptus</i>								
375	<i>globulus</i>	blue gum	14.8, 15.4	30.2	13.3	Fair	Fair	Fair	sparse crown, spindly, trunk damage

ID #	species	common name	DBH (in.)	sum DBH (in.)	average crown radius (ft.)	Overall Condition	Health	Structure	Notes
376	<i>Eucalyptus globulus</i>	blue gum	7.1	7.1	8.0	Poor	Fair	Poor	trunk damage, suppressed, branch dieback, spindly
377	<i>Eucalyptus globulus</i>	blue gum	17.9	17.9	14.0	Fair	Fair	Fair	spindly, sparse crown
378	<i>Eucalyptus globulus</i>	blue gum	14.8	14.8	14.7	Fair	Fair	Fair	spindly, sparse crown
379	<i>Eucalyptus globulus</i>	blue gum	14.8	14.8	6.7	Poor	Fair	Poor	very crowded, trunk damage, small crown
380	<i>Eucalyptus globulus</i>	blue gum	15.4	15.4	9.3	Fair	Fair	Poor	crowded, small crown
381	<i>Eucalyptus globulus</i>	blue gum	8.0	8.0	5.3	Fair	Fair	Fair	spindly, branch dieback, crowded, lean
382	<i>Eucalyptus globulus</i>	blue gum	7.2	7.2	6.0	Fair	Fair	Fair	spindly, branch dieback, crowded, lean
383	<i>Eucalyptus globulus</i>	blue gum	10.7	10.7	8.7	Fair	Fair	Fair	spindly, branch dieback, crowded, lean
384	<i>Eucalyptus globulus</i>	blue gum	6.3	6.3	5.3	Fair	Fair	Fair	spindly, branch dieback, crowded, lean
385	<i>Eucalyptus globulus</i>	blue gum	8.8	8.8	8.0	Fair	Fair	Fair	spindly, branch dieback, crowded, lean
386	<i>Eucalyptus globulus</i>	blue gum	15.7	15.7	16.7	Fair	Fair	Fair	spindly, branch dieback, crowded, lean
387	<i>Eucalyptus globulus</i>	blue gum	8.1, 7.8, 21.8	37.7	12.0	Fair	Fair	Fair	spindly, branch dieback, crowded, lean
388	<i>Eucalyptus globulus</i>	blue gum	12.1	12.1	8.7	Fair	Fair	Fair	spindly, branch dieback, crowded, lean
389	<i>Eucalyptus globulus</i>	blue gum	7.5	7.5	6.0	Fair	Fair	Fair	spindly, branch dieback, crowded, lean
390	<i>Eucalyptus globulus</i>	blue gum	6.0	6.0	6.3	Fair	Fair	Poor	spindly, branch dieback, crowded, lean
391	<i>Eucalyptus globulus</i>	blue gum	13.5	13.5	8.7	Fair	Fair	Poor	spindly, branch dieback, crowded, lean



ID #	species	common name	DBH (in.)	sum DBH (in.)	average crown radius (ft.)	Overall Condition	Health	Structure	Notes
	<i>Eucalyptus</i>								
392	<i>globulus</i>	blue gum	11.1	11.1	7.0	Fair	Fair	Poor	near two snags
	<i>Eucalyptus</i>								
393	<i>globulus</i>	blue gum	8.1, 7.5	15.6	11.7	Poor	Poor	Fair	major trunk dead
	<i>Eucalyptus</i>		16.3, 11.2,						
394	<i>globulus</i>	blue gum	7, 6	40.5	17.3	Fair	Fair	Poor	spindly, branch dieback, crowded, lean
	<i>Eucalyptus</i>								
395	<i>globulus</i>	blue gum	10.5	10.5	10.0	Fair	Fair	Poor	spindly, branch dieback, crowded, lean
	<i>Eucalyptus</i>		6, 10.5, 6.2,						
396	<i>globulus</i>	blue gum	11.7	34.4	7.3	Fair	Fair	Poor	spindly, branch dieback, crowded, lean
	<i>Eucalyptus</i>								
397	<i>globulus</i>	blue gum	24.6, 18, 6.5	49.1	18.0	Fair	Fair	Poor	dominant
	<i>Eucalyptus</i>		7.7, 10.5,						
398	<i>globulus</i>	blue gum	7.7, 13.4	39.3	12.0	Fair	Fair	Poor	spindly, branch dieback, crowded, lean
	<i>Eucalyptus</i>								
399	<i>globulus</i>	blue gum	6.3	6.3	5.3	Fair	Fair	Poor	spindly, branch dieback, crowded, lean
	<i>Eucalyptus</i>								
400	<i>globulus</i>	blue gum	8.2	8.2	6.7	Fair	Fair	Poor	spindly, branch dieback, crowded, lean
	<i>Eucalyptus</i>								
401	<i>globulus</i>	blue gum	6, 13.6, 10.5	30.1	11.3	Fair	Fair	Poor	spindly, branch dieback, crowded, lean
	<i>Eucalyptus</i>								
402	<i>globulus</i>	blue gum	7.8, 8.8	16.6	12.3	Fair	Fair	Poor	spindly, branch dieback, crowded, lean
	<i>Eucalyptus</i>		6.5, 7.5, 6.						
403	<i>globulus</i>	blue gum	13.5	33.5	17.3	Fair	Fair	Poor	spindly, branch dieback, crowded, lean
	<i>Eucalyptus</i>		15.3, 7.9,						
404	<i>globulus</i>	blue gum	8.3	31.5	15.0	Fair	Fair	Poor	spindly, branch dieback, crowded, lean
	<i>Eucalyptus</i>								
405	<i>globulus</i>	blue gum	9.2, 6.3, 8.2	23.7	5.3	Poor	Fair	Poor	suppressed, diseased
	<i>Eucalyptus</i>								
406	<i>globulus</i>	blue gum	14.2, 7.8	22.0	14.7	Fair	Fair	Poor	major lean
	<i>Eucalyptus</i>								
407	<i>globulus</i>	blue gum	15.5, 9.1, 17	41.6	18.0	Fair	Fair	Poor	spindly, branch dieback, crowded, lean

ID #	species	common name	DBH (in.)	sum DBH (in.)	average crown radius (ft.)	Overall Condition	Health	Structure	Notes
	<i>Eucalyptus</i>								
408	<i>globulus</i>	blue gum	33, 9.8, 14.5	57.3	18.0	Fair	Fair	Poor	dominant
	<i>Eucalyptus</i>								
409	<i>globulus</i>	blue gum	15.8	15.8	12.0	Fair	Fair	Poor	spindly, branch dieback, crowded, lean
410	<i>Pinus radiata</i>	Monterey pine	19.4	19.4	11.3	Fair	Good	Fair	lean, branch dieback
411	<i>Pinus radiata</i>	Monterey pine	33.0	33.0	16.7	Good	Good	Fair	branch dieback
	<i>Eucalyptus</i>								
412	<i>globulus</i>	blue gum	6.9, 6.8	13.7	8.0	Poor	Poor	Poor	suppressed, branch dieback
	<i>Eucalyptus</i>		21.6, 18,						
413	<i>globulus</i>	blue gum	17.5	57.1	26.0	Fair	Fair	Fair	branch dieback, sparse crown
	<i>Eucalyptus</i>		11.7, 21.2,						
414	<i>globulus</i>	blue gum	10.5	43.4	12.7	Poor	Fair	Poor	3 dead trunks
	<i>Acacia</i>	blackwood							
415	<i>melanoxylon</i>	acacia	6.3	6.3	6.7	Fair	Good	Fair	lean, suppressed
416	<i>Cedrus deodara</i>	deodar cedar	6.4	6.4	6.0	Good	Good	Good	
	<i>Acacia</i>	blackwood							
417	<i>melanoxylon</i>	acacia	10.0	10.0	6.3	Poor	Poor	Fair	sparse crown, branch damage
418	<i>Pinus radiata</i>	Monterey pine	11.5	11.5	6.3	Poor	Poor	Poor	lean, sparse crown, trunk damage
	<i>Acacia</i>	blackwood							
419	<i>melanoxylon</i>	acacia	10.3	10.3	10.0	Poor	Fair	Poor	broken top, branch damage
420	<i>Cedrus deodara</i>	deodar cedar	6.0	6.0	7.7	Poor	Fair	Poor	sparse crown, branch damage
421	<i>Cedrus deodara</i>	deodar cedar	7.1	7.1	8.7	Fair	Fair	Good	sparse crown
	<i>Acacia</i>	blackwood							
422	<i>melanoxylon</i>	acacia	6.9	6.9	8.0	Poor	Poor	Poor	trunk damage, lean, sparse crown
423	<i>Pinus radiata</i>	Monterey pine	6.5	6.5	6.3	Poor	Poor	Poor	lean, pitchy, sparse crown
424	<i>Pinus halepensis</i>	aleppo pine	7.3	7.3	7.0	Poor	Fair	Poor	lean, sparse crown
425	<i>Pinus halepensis</i>	aleppo pine	7.6	7.6	6.3	Fair	Fair	Fair	bent top
426	<i>Pinus halepensis</i>	aleppo pine	6.3	6.3	6.0	Poor	Poor	Poor	lying down, almost dead

ID #	species	common name	DBH (in.)	sum DBH (in.)	average crown radius (ft.)	Overall Condition	Health	Structure	Notes
427	<i>Pinus halepensis</i>	aleppo pine	8.2	8.2	7.3	Fair	Fair	Good	sparse crown
428	<i>Pinus halepensis</i>	aleppo pine	11.7	11.7	7.7	Good	Good	Good	slightly crowded
429	<i>Acacia melanoxylon</i>	blackwood acacia	8.2	8.2	7.7	Fair	Good	Poor	lean, bent trunk
430	<i>Pinus radiata</i>	Monterey pine	10.3	10.3	8.7	Fair	Fair	Fair	lean, foliage flagging, branch dieback
431	<i>Cedrus deodara</i>	deodar cedar	8.2	8.2	7.7	Good	Good	Fair	slight lean
432	<i>Pinus halepensis</i>	aleppo pine	12.9	12.9	8.0	Fair	Fair	Poor	lean, trunk bend, pitchy
433	<i>Pinus halepensis</i>	aleppo pine	11.8	11.8	8.3	Good	Good	Good	
434	<i>Acacia melanoxylon</i>	blackwood acacia	8.0	8.0	6.7	Fair	Good	Fair	trunk bend, lean
435	<i>Pinus halepensis</i>	aleppo pine	7.8	7.8	6.3	Fair	Good	Poor	major lean
436	<i>Acacia melanoxylon</i>	blackwood acacia	8.5	8.5	6.3	Fair	Good	Fair	branch damage
437	<i>Pinus halepensis</i>	aleppo pine	10.8	10.8	6.3	Poor	Poor	Poor	lean, sparse crown, branch damage, pitchy
438	<i>Pinus halepensis</i>	aleppo pine	6.3	6.3	5.0	Poor	Poor	Poor	broken trunk, sparse crown
439	<i>Acacia melanoxylon</i>	blackwood acacia	7.4	7.4	6.3	Fair	Good	Fair	split top
440	<i>Pinus halepensis</i>	aleppo pine	7.5	7.5	6.0	Poor	Poor	Poor	trunk bent, lean, sparse crown
441	<i>Pinus halepensis</i>	aleppo pine	13.0	13.0	10.0	Poor	Poor	Poor	pitchy, lean, several leaders
442	<i>Acacia melanoxylon</i>	blackwood acacia	7.1	7.1	8.7	Fair	Good	Poor	lean, branch dieback
443	<i>Pinus halepensis</i>	aleppo pine	9.5	9.5	9.0	Poor	Poor	Poor	lean, sparse crown
444	<i>Pinus halepensis</i>	aleppo pine	6.3	6.3	8.3	Poor	Poor	Poor	lying down
445	<i>Cedrus deodara</i>	deodar cedar	6.0	6.0	8.7	Good	Good	Good	
446	<i>Acacia melanoxylon</i>	blackwood acacia	9.2	9.2	10.3	Fair	Good	Fair	twisted top
447	<i>Cedrus deodara</i>	deodar cedar	6.5	6.5	10.3	Good	Good	Good	two leaders
448	<i>Pinus radiata</i>	Monterey pine	11.6, 9.1	20.7	12.0	Poor	Poor	Poor	sparse crown, bent trunk, trash

ID #	species	common name	DBH (in.)	sum DBH (in.)	average crown radius (ft.)	Overall Condition	Health	Structure	Notes
449	<i>Pinus radiata</i>	Monterey pine	9.8	9.8	8.0	Poor	Poor	Poor	pitchy, lean, sparse crown
	<i>Acacia</i>	blackwood							
450	<i>melanoxylon</i>	acacia	9.7	9.7	10.0	Fair	Good	Poor	topped, pruned
451	<i>Pinus radiata</i>	Monterey pine	10.5	10.5	12.3	Poor	Poor	Poor	topped, pitchy, bent trunk, sparse crown
452	<i>Pinus radiata</i>	Monterey pine	10.1	10.1	8.0	Poor	Fair	Poor	major lean, sparse crown
453	<i>Cedrus deodara</i>	deodar cedar	6.3	6.3	7.3	Good	Good	Good	
	<i>Acacia</i>	blackwood							
454	<i>melanoxylon</i>	acacia	8.9	8.9	7.3	Fair	Good	Fair	topped
455	<i>Pinus radiata</i>	Monterey pine	11.9	11.9	9.0	Poor	Poor	Poor	pitchy, sparse crown, lean
456	<i>Pinus radiata</i>	Monterey pine	9.2	9.2	10.0	Poor	Poor	Poor	sparse crown, bent trunk
457	<i>Pinus radiata</i>	Monterey pine	8.9	8.9	9.3	Poor	Poor	Poor	sparse crown, bent trunk, lean
458	<i>Pinus radiata</i>	Monterey pine	6.8	6.8	6.3	Fair	Fair	Poor	sparse crown, lean
459	<i>Cedrus deodara</i>	deodar cedar	6.1	6.1	10.0	Good	Good	Good	
460	<i>Pinus radiata</i>	Monterey pine	7.1	7.1	7.0	Poor	Poor	Poor	sparse crown, lean
	<i>Acacia</i>	blackwood							
461	<i>melanoxylon</i>	acacia	7.9	7.9	6.0	Fair	Fair	Good	sparse crown, twig dieback
	<i>Acacia</i>	blackwood							
462	<i>melanoxylon</i>	acacia	6.2	6.2	7.3	Fair	Fair	Fair	sparse crown, twig dieback
463	<i>Pinus radiata</i>	Monterey pine	8.9	8.9	7.3	Poor	Fair	Poor	sparse crown, forked trunk
	<i>Acacia</i>	blackwood							
464	<i>melanoxylon</i>	acacia	9.3	9.3	7.0	Fair	Fair	Fair	slight lean
465	<i>Pinus radiata</i>	Monterey pine	8.9	8.9	9.0	Poor	Poor	Poor	sparse crown, major lean, pitchy

General Mills Site - Tree Survey

April 25, 28, 2008



ID #	species	common name	DBH (in.)	sum DBH (in.)	average crown radius (ft.)	Overall Condition	Health	Structure	Notes
466	<i>Acacia melanoxylon</i>	blackwood acacia	8.0	8.0	6.0	Fair	Fair	Good	sparse crown, topped
467	<i>Pinus radiata</i>	Monterey pine	6.8	6.8	6.0	Poor	Poor	Poor	sparse crown, lean, pitchy
468	<i>Pinus radiata</i>	Monterey pine	6.9	6.9	8.3	Poor	Poor	Poor	sparse crown, lean, pitchy
601	<i>Pinus radiata</i>	Monterey pine	14	14	10.0	Fair	Fair	Poor	branch dieback
602	<i>Pinus radiata</i>	Monterey pine	16, 14	30	13.0	Fair	Fair	Poor	branch dieback
603	<i>Pinus radiata</i>	Monterey pine	16, 10	26	9.3	Fair	Fair	Poor	branch dieback
604	<i>Eucalyptus polyanthemos</i>	Australian beech	9.1, 6.6	15.7	15.3	Fair	Fair	Fair	trunk damage
605	<i>Eucalyptus globulus</i>	blue gum	26, 16, 15.1, 15.7	72.8	24.0	Fair	Good	Fair	branch dieback
606	<i>Acacia melanoxylon</i>	blackwood acacia	10	10	10.0	Fair	Fair	Fair	stunted
607	<i>Acacia melanoxylon</i>	blackwood acacia	10.2	10.2	7.3	Poor	Poor	Fair	perched on steep slope, trunk damage
608	<i>Pinus radiata</i>	Monterey pine	11.6	11.6	10.7	Fair	Fair	Good	on steep slope
609	<i>Pinus radiata</i>	Monterey pine	17.6	17.6	17.0	Fair	Good	Fair	branch dieback, twig dieback
610	<i>Eucalyptus leucoxylon</i>	white ironbark	17.7, 18.9, 14.6	51.2	26.7	Poor	Poor	Fair	branch dieback, sparse crown
611	<i>Eucalyptus leucoxylon</i>	white ironbark	17	17	13.0	Fair	Fair	Fair	branch dieback, sparse crown
612	<i>Eucalyptus globulus</i>	blue gum	32.8	32.8	26.0	Good	Good	Fair	dominant, small branch dieback
613	<i>Eucalyptus globulus</i>	blue gum	20.6	20.6	12.0	Fair	Fair	Fair	small branch dieback, crowded

ID #	species	common name	DBH (in.)	sum DBH (in.)	average crown radius (ft.)	Overall Condition	Health	Structure	Notes
	<i>Eucalyptus</i>								
614	<i>leucoxydon</i>	white ironbark	8.7	8.7	5.3	Poor	Poor	Fair	sparse crown, branch dieback
	<i>Eucalyptus</i>								
615	<i>globulus</i>	blue gum	11.7	11.7	8.7	Poor	Poor	Poor	sparse crown, suppressed
616	<i>Pinus halepensis</i>	aleppo pine	6.9	6.9	5.3	Poor	Poor	Poor	wrapped around #615
	<i>Eucalyptus</i>								
<b>617</b>	<i>globulus</i>	blue gum	10.7, 7.1	17.8	15.3	Fair	Good	Fair	
	<i>Eucalyptus</i>								
618	<i>globulus</i>	blue gum	7.3	7.3	5.3	Poor	Poor	Poor	suppressed, small crown
	<i>Eucalyptus</i>								
619	<i>globulus</i>	blue gum	10.9	10.9	8.0	Poor	Fair	Poor	spindly
	<i>Eucalyptus</i>								
620	<i>globulus</i>	blue gum	10.9	10.9	8.0	Poor	Fair	Poor	broken top, herbivory
	<i>Eucalyptus</i>								
621	<i>globulus</i>	blue gum	9.8	9.8	4.3	Poor	Poor	Poor	broken top, branch dieback
	<i>Eucalyptus</i>								
622	<i>globulus</i>	blue gum	19.8	19.8	12.7	Fair	Fair	Fair	thin crown
	<i>Eucalyptus</i>								
623	<i>globulus</i>	blue gum	17.8	17.8	14.0	Fair	Good	Fair	major lean, robust crown
	<i>Eucalyptus</i>								
624	<i>globulus</i>	blue gum	9.5, 18.8, 14.2, 8.6	51.1	28.7	Fair	Fair	Good	dominant, branch dieback
	<i>Eucalyptus</i>								
625	<i>globulus</i>	blue gum	15.1	15.1	12.7	Fair	Good	Fair	crowded
	<i>Eucalyptus</i>								
626	<i>camaldulensis</i>	red gum	7.7, 8.2	15.9	7.3	Poor	Fair	Poor	suppressed, major lean
	<i>Eucalyptus</i>								
627	<i>camaldulensis</i>	red gum	13.7, 16.5, 14.8	45.0	23.3	Fair	Fair	Fair	branch dieback, sparse crown
	<i>Eucalyptus</i>								
628	<i>leucoxydon</i>	white ironbark	11.2	11.2	7.3	Poor	Fair	Poor	suppressed, branch dieback
	<i>Eucalyptus</i>								
629	<i>globulus</i>	blue gum	15.9	15.9	13.7	Fair	Fair	Fair	branch dieback



General Mills Site - Tree Survey

April 25, 28, 2008



ID #	species	common name	DBH (in.)	sum DBH (in.)	average crown radius (ft.)	Overall Condition	Health	Structure	Notes
630	<i>Eucalyptus camaldulensis</i>	red gum	18.1	18.1	11.7	Fair	Fair	Poor	branch dieback, crowded
631	<i>Eucalyptus camaldulensis</i>	red gum	14.6	14.6	11.3	Fair	Good	Fair	branch dieback, crowded
632	<i>Eucalyptus globulus</i>	blue gum	14.2, 13.8, 9.1	37.1	17.0	Fair	Good	Fair	crowded, lean
633	<i>Eucalyptus globulus</i>	blue gum	18, 9.5	27.5	23.3	Fair	Good	Fair	crowded, lean
634	<i>Eucalyptus globulus</i>	blue gum	23.8	23.8	16.7	Fair	Good	Fair	crowded, included bark
635	<i>Eucalyptus globulus</i>	blue gum	20.5	20.5	14.7	Fair	Good	Fair	dominant, branch dieback
636	<i>Eucalyptus globulus</i>	blue gum	14.1	14.1	9.3	Fair	Good	Fair	small crown, spindly
637	<i>Eucalyptus leucoxydon</i>	white ironbark	13.4	13.4	8.0	Poor	Fair	Poor	sparse crown
638	<i>Eucalyptus globulus</i>	blue gum	9.4	9.4	7.0	Poor	Fair	Poor	suppressed
639	<i>Eucalyptus globulus</i>	blue gum	11.7	11.7	6.7	Poor	Poor	Poor	suppressed, small crown
640	<i>Eucalyptus globulus</i>	blue gum	7.2	7.2	10.0	Poor	Fair	Poor	sparse crown, crowded
641	<i>Eucalyptus globulus</i>	blue gum	10.9	10.9	8.0	Poor	Poor	Poor	suppressed
642	<i>Eucalyptus globulus</i>	blue gum	12.6	12.6	12.3	Fair	Fair	Fair	sparse crown, lean
643	<i>Eucalyptus globulus</i>	blue gum	8.6	8.6	9.3	Poor	Fair	Poor	major lean, sparse crown
644	<i>Eucalyptus leucoxydon</i>	white ironbark	11, 11.2, 8.1	30.3	14.0	Poor	Poor	Poor	sparse crown, branch dieback
645	<i>Eucalyptus leucoxydon</i>	white ironbark	18.6	18.6	15.3	Fair	Fair	Fair	major lean, sparse crown, branch dieback

ID #	species	common name	DBH (in.)	sum DBH (in.)	average crown radius (ft.)	Overall Condition	Health	Structure	Notes
	<i>Eucalyptus</i>								
646	<i>leucoxylon</i>	white ironbark	7.1	7.1	7.3	Poor	Fair	Poor	sparse crown, branch damage
	<i>Eucalyptus</i>								
647	<i>leucoxylon</i>	white ironbark	24.8	24.8	18.0	Fair	Fair	Fair	branch dieback, crowded, sparse crown
	<i>Eucalyptus</i>								
648	<i>globulus</i>	blue gum	14.3, 12.2	26.5	19.3	Fair	Fair	Fair	major lean, major branch dieback
	<i>Eucalyptus</i>								
649	<i>leucoxylon</i>	white ironbark	8.5	8.5	8.0	Poor	Fair	Poor	crowded, sparse crown
	<i>Eucalyptus</i>								
650	<i>leucoxylon</i>	white ironbark	8.7	8.7	7.3	Poor	Poor	Poor	suppressed, major lean
<b>651</b>	<i>Pinus radiata</i>	Monterey pine	20.0	20.0	11.3	Fair	Fair	Fair	branch dieback, crown dieback
<b>652</b>	<i>Pinus halepensis</i>	aleppo pine	14.0	14.0	10.0	Poor	Poor	Poor	stressed, sparse crown, lean
<b>653</b>	<i>Pinus halepensis</i>	aleppo pine	6.0	6.0	8.0	Poor	Poor	Poor	stressed, sparse crown, lean
<b>654</b>	<i>Pinus halepensis</i>	aleppo pine	6.0	6.0	8.0	Poor	Poor	Poor	stressed, sparse crown, lean
<b>655</b>	<i>Pinus halepensis</i>	aleppo pine	6.0	6.0	8.0	Poor	Poor	Poor	stressed, sparse crown, lean

\* ID numbers in bold indicate the tree is **not tagged**